



Performance



Accessibility



Best Practices



SEO

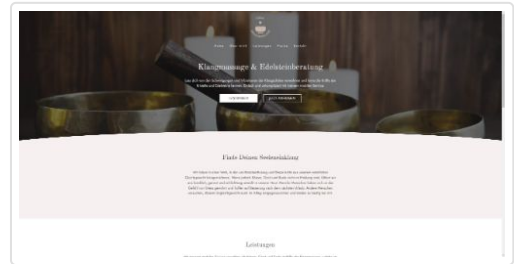


PWA



# Performance

Values are estimated and may vary. The [performance score is calculated](#) directly from these metrics. [See calculator.](#)



▲ 0–49      50–89      90–100

## METRICS

Expand view

First Contentful Paint

0.3 s

Time to Interactive

0.3 s

Speed Index

0.3 s

Total Blocking Time

0 ms

Largest Contentful Paint

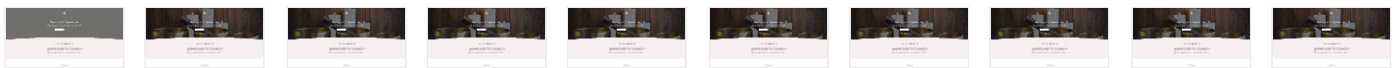
0.4 s

Cumulative Layout Shift

0.024

View Treemap

View Original Trace



Show audits relevant to: All [FCP](#) [TBT](#) [LCP](#) [CLS](#)

## OPPORTUNITIES

Opportunity

Estimated Savings

Properly size images

0.13 s ▾

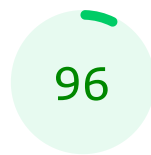
These suggestions can help your page load faster. They don't [directly affect](#) the Performance score.

## DIAGNOSTICS

- Avoid chaining critical requests — 11 chains found ▼
- Keep request counts low and transfer sizes small — 24 requests • 717 KiB ▼
- Largest Contentful Paint element — 1 element found ▼
- Avoid large layout shifts — 5 elements found ▼

More information about the performance of your application. These numbers don't [directly affect](#) the Performance score.

## PASSED AUDITS (35)

[Show](#)

## Accessibility

These checks highlight opportunities to [improve the accessibility of your web app](#). Only a subset of accessibility issues can be automatically detected so manual testing is also encouraged.

## CONTRAST

- ▲ Background and foreground colors do not have a sufficient contrast ratio. ▼

These are opportunities to improve the legibility of your content.

## NAMES AND LABELS

- ▲ Links do not have a discernible name ▼

These are opportunities to improve the semantics of the controls in your application. This may enhance the experience for users of assistive technology, like a screen reader.

## ADDITIONAL ITEMS TO MANUALLY CHECK (10)

[Show](#)

These items address areas which an automated testing tool cannot cover. Learn more in our guide on [conducting an accessibility review](#).

PASSED AUDITS (23)

Show

NOT APPLICABLE (19)

Show



## Best Practices

### TRUST AND SAFETY

- Ensure CSP is effective against XSS attacks



### GENERAL

- Detected JavaScript libraries



PASSED AUDITS (13)

Show

NOT APPLICABLE (1)

Show



## SEO

These checks ensure that your page is following basic search engine optimization advice. There are many additional factors Lighthouse does not score here that may affect your search ranking, including performance on [Core Web Vitals](#). [Learn more](#).

ADDITIONAL ITEMS TO MANUALLY CHECK (1)

Show

Run these additional validators on your site to check additional SEO best practices.

PASSED AUDITS (12)

Show

NOT APPLICABLE (2)

Show



# PWA

These checks validate the aspects of a Progressive Web App. [Learn more.](#)

## INSTALLABLE

- ▲ Web app manifest or service worker do not meet the installability requirements — 1 reason ▼

## PWA OPTIMIZED

- ▲ Does not register a service worker that controls page and [start\\_url](#) ▼
- ▲ Is not configured for a custom splash screen **Failures: No manifest was fetched.** ▼
- ▲ Does not set a theme color for the address bar. **Failures: No manifest was fetched, No ``<meta name="theme-color">`` tag found.** ▼
- Content is sized correctly for the viewport ▼
- Has a `<meta name="viewport">` tag with [width](#) or [initial-scale](#) ▼
- Provides a valid [apple-touch-icon](#) ▼
- ▲ Manifest doesn't have a maskable icon **No manifest was fetched** ▼

## ADDITIONAL ITEMS TO MANUALLY CHECK (3)

Show

These checks are required by the baseline [PWA Checklist](#) but are not automatically checked by Lighthouse. They do not affect your score but it's important that you verify them manually.

■ Captured at Feb 12, 2023,  
5:51 PM GMT+1

■ Initial page load

■ Emulated Desktop with  
[Lighthouse 9.6.8](#)

■ Custom throttling

■ Single page load

■ Using Chromium 110.0.0.0 with  
[devtools](#)

