



Performance



Accessibility



Best Practices



SEO

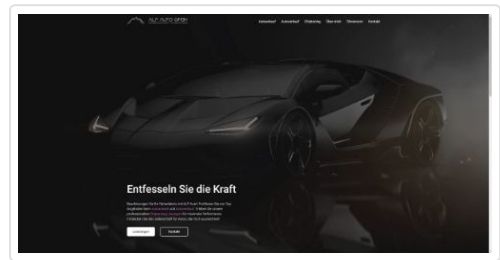


PWA



Performance

Values are estimated and may vary. The [performance score is calculated](#) directly from these metrics. [See calculator.](#)



▲ 0–49 50–89 90–100

METRICS

[Expand view](#)

First Contentful Paint

0.4 s

Largest Contentful Paint

0.4 s

Total Blocking Time

0 ms

Cumulative Layout Shift

0

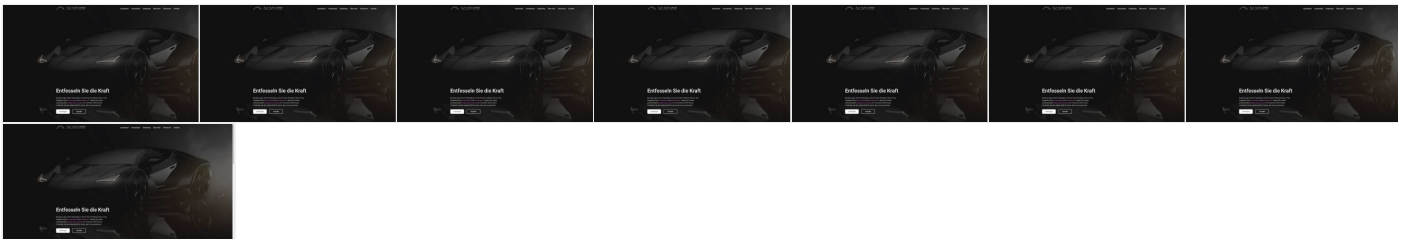
Speed Index

0.4 s



[View Treemap](#)

[View Original Trace](#)



Show audits relevant to: All [FCP](#) [LCP](#) [TBT](#) [CLS](#)

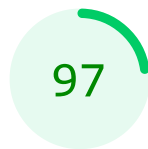
DIAGNOSTICS

- ▲ Ensure text remains visible during webfont load ▼
- Avoid chaining critical requests — 5 chains found ▼
- Keep request counts low and transfer sizes small — 20 requests • 540 KiB ▼
- Largest Contentful Paint element — 410 ms ▼
- Avoid large layout shifts — 5 elements found ▼

More information about the performance of your application. These numbers don't [directly affect](#) the Performance score.

PASSED AUDITS (35)

Show



Accessibility

These checks highlight opportunities to [improve the accessibility of your web app](#). Only a subset of accessibility issues can be automatically detected so manual testing is also encouraged.

CONTRAST

- ▲ Background and foreground colors do not have a sufficient contrast ratio. ▼

These are opportunities to improve the legibility of your content.

ADDITIONAL ITEMS TO MANUALLY CHECK (10)

Show

These items address areas which an automated testing tool cannot cover. Learn more in our guide on [conducting an accessibility review](#).

PASSED AUDITS (18)

Show

NOT APPLICABLE (29)

Show



Best Practices

TRUST AND SAFETY

Ensure CSP is effective against XSS attacks



GENERAL

Detected JavaScript libraries



PASSED AUDITS (13)

Show

NOT APPLICABLE (1)

Show



SEO

These checks ensure that your page is following basic search engine optimization advice. There are many additional factors Lighthouse does not score here that may affect your search ranking, including performance on [Core Web Vitals](#). [Learn more about Google Search Essentials](#).

ADDITIONAL ITEMS TO MANUALLY CHECK (1)

Show

Run these additional validators on your site to check additional SEO best practices.

PASSED AUDITS (12)

Show

NOT APPLICABLE (2)

Show



PWA

These checks validate the aspects of a Progressive Web App. [Learn what makes a good Progressive Web App](#).

INSTALLABLE

▲ Web app manifest or service worker do not meet the installability requirements — 1 reason ▼

PWA OPTIMIZED

▲ Does not register a service worker that controls page and start_url ▼

▲ Is not configured for a custom splash screen Failures: No manifest was fetched. ▼

▲ Does not set a theme color for the address bar. Failures: No manifest was fetched, No <meta name="theme-color"> tag found. ▼

○ Content is sized correctly for the viewport ▼

Has a <meta name="viewport"> tag with width or initial-scale ▼

▲ Manifest doesn't have a maskable icon No manifest was fetched ▼

ADDITIONAL ITEMS TO MANUALLY CHECK (3)

Show

These checks are required by the baseline [PWA Checklist](#) but are not automatically checked by Lighthouse. They do not affect your score but it's important that you verify them manually.

■ Captured at Sep 2, 2023, 3:49 PM GMT+2

■ Emulated Desktop with Lighthouse 10.3.0

■ Single page load

■ Initial page load

■ Custom throttling

■ Using Chromium 116.0.0.0 with devtools

Generated by Lighthouse 10.3.0 | [File an issue](#)